

DIAMOND® FOOD PACKAGING CHAIN

Diamond is committed to providing high-quality chains that perform in demanding and specialized applications.

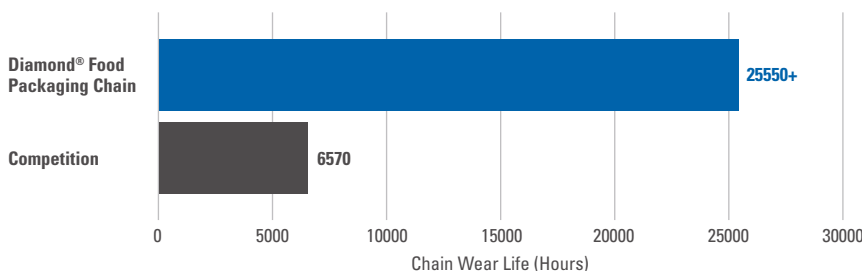
Our Food Packaging Chain is designed to maximize the performance of your food packaging equipment, as well as numerous industrial applications.



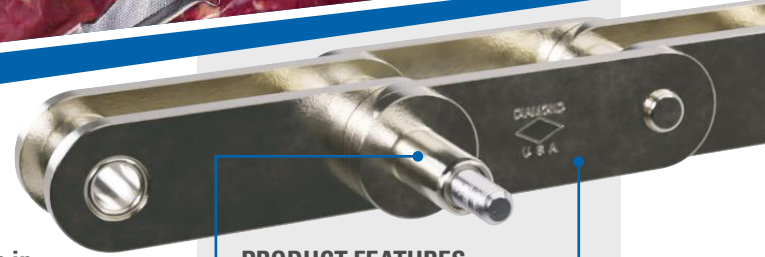
WEAR LIFE PROJECTION ON FOOD PACKAGING EQUIPMENT

Diamond® Food Packaging Chain has been tested on customer equipment. 35 months later, the chain is still running strong.

- Starting out, the new chain measured 32.27mm
- Thirty-five months later, the take-up gap was 24.85mm
 - The chain is still running on the machine at time of publication
- Once the chain reaches 17mm, it will need to be replaced



Field testing data based on competitor and Diamond® chain used on same machine in food packaging environments. Actual results may vary.



PRODUCT FEATURES AND BENEFITS

Nickel-plated carbon steel offers protection in high humidity or wash down environments

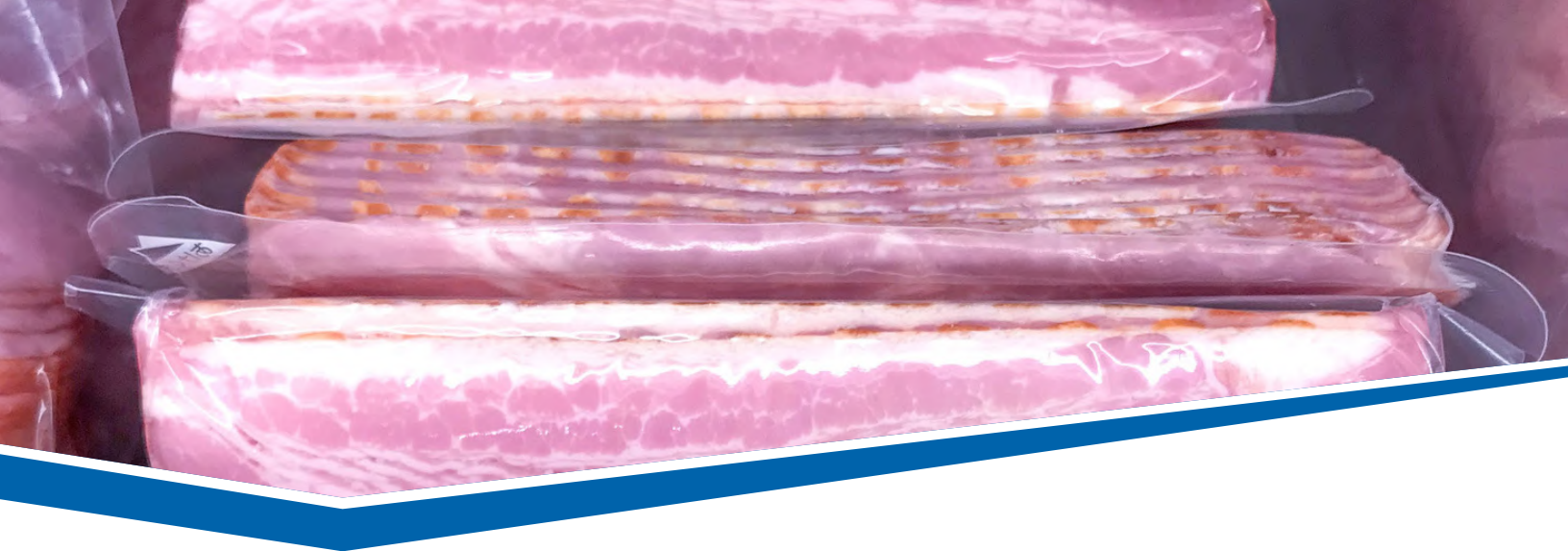
Carbon steel substrate provides strength and wear performance

Nickel plating establishes a corrosion resistant barrier to prevent rust

Extended stainless steel pins resist corrosion when exposed to chemicals or acids

PACKAGING APPLICATIONS

- Beef
- Pork
- Poultry
- Cheese
- Processed Foods



THE DIAMOND DIFFERENCE

Using high-quality materials leads to greater strength and durability. In addition, our chain components are USA-manufactured.

- **Materials** – high-quality steel with minimal impurities offers increased tensile and fatigue strength
- **Fabrication** – exacting dimensional standards offer optimal performance by ensuring components fit together as precisely as possible
- **Heat Treatment** – strict atmosphere and quench control optimizes material properties to increase strength, durability and wear resistance
- **Shot Peening** – consistent shot peen intensity and coverage adds a layer of compressive stress, helping components resist fatigue failure when exposed to repeated high loads
- **Lubrication** – lubrication enhances corrosion protection and lessens the effects of friction to increase chain life
- **Preloading** – pre-stressing of the finished product reduces initial “stretching” to extend chain wear life

We offer:

- **In-house manufacturing** – ensures production flexibility
- **Quality of service** – state of the art engineering includes research and development plus product testing
- **Availability** – most popular sizes in stock and ready for delivery

From concept, to production and throughout the life of the chain, we work hard and smart to solve industry-specific problems.

FOOD PACKAGING CHAIN OFFERINGS

Diamond Legacy	CRYOVAC ^{®1} Machine Number	Chain Size	Description	Chain Length	Pin Spacing
X-1417914-B	8600-14	C2100H – 2-1/2” Pitch	2-CHAIN KIT DMDC2100H-1R V NP-A; E3454	154 pitches	Every 3rd and 8th
X-1417914-AZ	8600-14EL	C2100H – 2-1/2” Pitch	2-CHAIN KIT DMDC2100H-1R V NP-A; E3455	150 pitches	Every 3rd and 12th
X-1413121	8600-14E	C2100H – 2-1/2” Pitch	2-CHAIN KIT DMDC2100H-1R V NP-C; E3456	156 pitches	Every 3rd and 10th
X-1313171	8300-24	C2160H – 4” Pitch	2-CHAIN KIT DMDC2160H-1R V NP; E3457	130 pitches	Every 3rd and 10th
X-3113222-A	8600-18	C2120H – 3” Pitch	2-CHAIN KIT DMDC2120H-1R V NP-A; E3458	144 pitches	Every 3rd and 9th
X-3113222	8300-18	C2120H – 3” Pitch	2-CHAIN KIT DMDC2120H-1R V NP-B; E3459	130 pitches	Every 3rd and 10th

¹ Cryovac[®] is a registered trademark of Cryovac, LLC.

Timken offers a wide range of engineered bearings and power transmission products to serve the food and beverage industry.

Call on Timken. For your nearest Timken sales representative, visit www.timken.com.



Diamond[®] chains are part of The Timken Company's portfolio of engineered bearings and industrial motion products.

www.diamondchain.com