

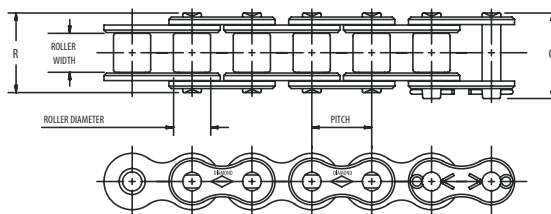


NICKEL - PLATED CHAIN

Diamond Chain produces a full line of nickel-plated roller chains for a variety of uses in environments where the chains are exposed to moisture. Common uses include applications exposed to the weather, high humidity, or those on machines that are frequently washed down with water.

Diamond nickel-plated chain provides superior protection from the elements, greatly extending the life of the base chain when operating in wet conditions. Each individual component of Diamond nickel-plated chain is plated before assembly to ensure full coverage and plate depth.

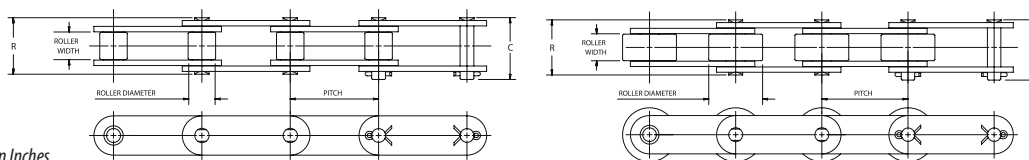
SINGLE PITCH DRIVE CHAINS



Dimensions in Inches

ASME/ANSI Number	Pitch Inches	Roller Width	Roller Diameter	Pin Diameter	Link Plate Thickness	C	R	Pounds Per Foot	Average Tensile Strength
25NP	1/4	1/8	*.130	0.090	0.030	0.37	0.34	0.085	875
35NP	3/8	3/16	*.200	0.141	0.050	0.56	0.50	0.220	2100
40NP	1/2	5/16	0.312	0.156	0.060	0.72	0.67	0.420	4000
50NP	5/8	3/8	0.400	0.200	0.080	0.89	0.83	0.680	6600
60NP	3/4	1/2	0.469	0.234	0.094	1.11	1.04	0.970	8500
80NP	1	5/8	0.625	0.312	0.125	1.44	1.32	1.700	14500
100NP	1 1/4	3/4	0.750	0.375	0.156	1.73	1.61	2.500	24000
120NP	1 1/2	1	0.875	0.437	0.187	2.14	2.00	3.700	34000

DOUBLE PITCH DRIVE CHAINS



Dimensions in Inches

ASME/ANSI Number	Pitch Inches	Roller Width	Roller Diameter	Pin Diameter	Link Plate Thickness	C	R	Pounds Per Foot	Average Tensile Strength
C2040NP	1	1/8	0.312	0.156	0.060	0.76	0.68	0.340	3700
C2042NP	1	3/16	0.625	0.156	0.060	0.76	0.68	0.340	3700
C2050NP	1 1/4	5/16	0.400	0.000	0.080	0.92	0.84	0.580	6100
C2052NP	1 1/4	3/8	0.750	0.200	0.080	0.92	0.84	0.580	6100
C2060HNP	1 1/2	1/7	0.469	0.234	0.125	1.25	1.18	1.050	8500
C2062HNP	1 1/2	1/2	0.875	0.234	0.125	1.25	1.18	1.050	8500
C2080HNP	2	5/8	0.625	0.312	0.156	1.57	1.45	1.400	14500
C20802HNP	2	5/8	1.125	0.312	0.156	1.57	1.45	1.400	14500

*Chains are rollerless - dimension shown is bushing diameter.



NOTHING OUTLASTS A DIAMOND.®



DIAMOND ACE® CHAIN

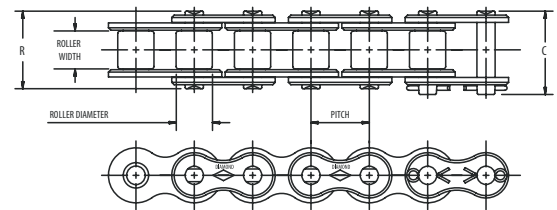
The Diamond ACE (anti-corrosion exterior) chain incorporates an electrochemically bonded, protective exterior coating that is applied prior to assembly. Each individual part is treated before assembly using an electrochemical bonding process that provides maximum resistance to iron oxide (red rust) corrosion. Pre-assembly coating ensures all component parts are thoroughly treated, which prevents internal rust from seeping out and causing contamination. Diamond ACE features a zinc-nickel and non-hexavalent chromate coating with a protective lubricant to provide corrosion protection and extended wear resistance. The anti-corrosion exterior is specifically designed to permit sacrificial oxidation of the outer layer, allowing the chain to function without corrosive attack of the base metal.

Independent salt spray and sprocket drive tests have shown that Diamond ACE is superior in balancing corrosion protection and performance.

NOTE: These chains are not intended to resist corrosion from caustic chemicals or acids. Stainless steel chain is recommended for those types of applications. Contact Diamond's application engineers for assistance in selecting the proper chain for your application.

CORROSION CHAIN - CHAIN DESCRIPTIONS AND DIMENSIONS

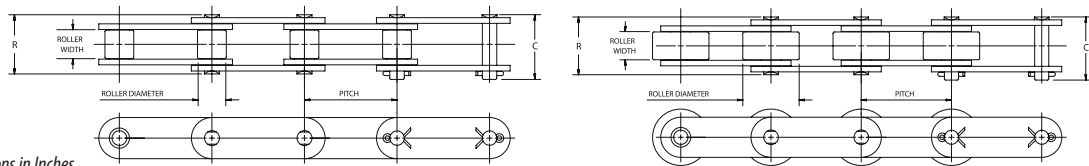
SINGLE PITCH DRIVE CHAINS



Dimensions in Inches

ASME/ANSI Number	Pitch Inches	Roller Width	Roller Diameter	Pin Diameter	Link Plate Thickness	C	R	Pounds Per Foot	Average Tensile Strength
40 ACE	1/2	5/16	0.312	0.156	0.060	0.72	0.67	0.420	4000
50 ACE	5/8	3/8	0.400	0.200	0.080	0.89	0.83	0.680	6600
60 ACE	3/4	1/2	0.469	0.234	0.094	1.11	1.04	0.970	8500
80 ACE	1	5/8	0.625	0.312	0.125	1.44	1.32	1.700	14500

DOUBLE PITCH DRIVE CHAINS



Dimensions in Inches

ASME/ANSI Number	Pitch Inches	Roller Width	Roller Diameter	Pin Diameter	Link Plate Thickness	C	R	Pounds Per Foot	Average Tensile Strength
C2040 ACE	1	5/16	0.312	0.156	0.060	0.76	0.68	0.340	3700
C2042 ACE	1	5/16	0.625	0.156	0.060	0.76	0.68	0.340	3700
C2050 ACE	1 1/4	3/8	0.400	0.200	0.080	0.92	0.84	0.580	6100
C2052 ACE	1 1/4	3/8	0.750	0.200	0.080	0.92	0.84	0.580	6100
C2060H ACE	1 1/2	1/2	0.469	0.234	0.125	1.25	1.18	1.050	8500
C2062H ACE	1 1/2	1/2	0.875	0.234	0.125	1.25	1.18	1.050	8500
C2080H ACE	2	5/8	0.625	0.312	0.156	1.57	1.45	1.400	14500
C2082H ACE	2	5/8	1.125	0.312	0.156	1.57	1.45	1.400	14500

NOTE: For sizes not listed, contact Diamond for availability on a made-to-order basis.

**FOR MORE INFORMATION, PLEASE CONTACT YOUR SALES DISTRICT MANAGER
OR CALL 877-484-6536 TO PLACE YOUR ORDER.**

NOTHING OUTLASTS A DIAMOND.®



STAINLESS STEEL CHAIN

Diamond produces a wide range of single-pitch and double-pitch stainless steel conveyor chains. These chains are offered in four different stainless steel series to best suit your needs: AP series, 300 series, 400 series, and 600 series.

AP SERIES STAINLESS STEEL CHAIN

These chains are assembled using 300 series link plates, bushings, and rollers along with a precipitation-hardened stainless steel pin. This combination increases the wear life of the chain. AP stainless steel chains are well suited for food processing and are approved by the FDA.

300 SERIES STAINLESS STEEL CHAIN

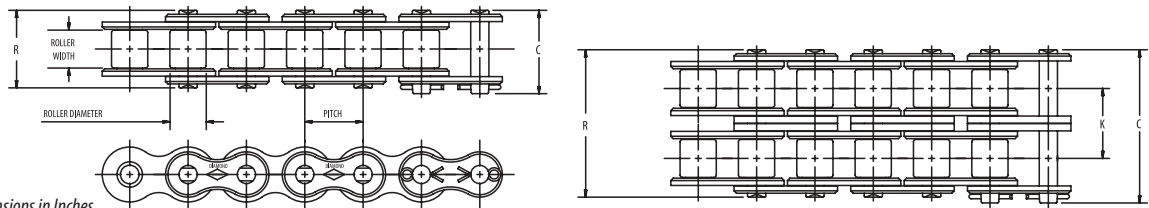
These chains are assembled using only 300 series components. They have excellent corrosion resistance and very low magnetic permeability. The 300 series chain is a "non-sparking" chain.

400 SERIES STAINLESS STEEL CHAIN

These chains are manufactured using 300 series link plates but have pins, bushings, and rollers that are produced from 400 series heat treated stainless steel. This combination significantly increases wear resistance over those that are constructed using only 300 series stainless steel components.

600 SERIES STAINLESS STEEL CHAIN

These chains are assembled using 300 series link plates with pins, bushings, and rollers made from 600 series precipitation-hardened stainless steel.



Dimensions in Inches

ASME/ANSI Number	Pitch Inches	Roller Width	Roller Diameter	Pin Diameter	Link Plate Thickness	C	R	K	Pounds Per Foot	Average Tensile Strength
47SS	.1475	0.072	*.090	0.062	0.015	0.25	0.22	0.035	180
25SS	1/4	1/8	*.130	0.090	0.030	0.37	0.34	0.084	700
25-2SS	1/4	1/8	*.130	0.090	0.030	0.63	0.59	0.252	0.163	1400
35SS	3/8	3/16	*.200	0.141	0.050	0.56	0.50	0.210	1700
40SS	1/2	5/16	0.312	0.156	0.060	0.72	0.67	0.410	3000
40-2SS	1/2	5/16	0.312	0.156	0.060	1.29	1.24	0.566	0.800	6000
41SS	1/2	1/4	0.306	0.141	0.050	0.65	0.57	0.280	1700
50SS	5/8	3/8	0.400	0.200	0.080	0.89	0.83	0.680	4700
50-2SS	5/8	3/8	0.400	0.200	0.080	1.60	1.55	0.713	1.320	9400
60SS	3/4	1/2	0.469	0.234	0.094	1.11	1.04	1.000	6750
60-2SS	3/4	1/2	0.469	0.234	0.094	2.01	1.94	0.897	1.950	13500
80SS	1	5/6	0.625	0.312	0.125	1.44	1.32	1.690	12000

*Chains are rollerless - dimension shown is bushing diameter.

CORROSION CHAIN - CHAIN DESCRIPTIONS AND DIMENSIONS

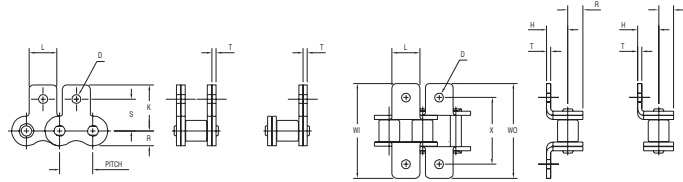
FOR MORE INFORMATION, PLEASE CONTACT YOUR SALES DISTRICT MANAGER
OR CALL 877-484-6536 TO PLACE YOUR ORDER.

NOTHING OUTLASTS A DIAMOND.®



STANDARD STRAIGHT AND BENT ATTACHMENT STAINLESS STEEL CHAIN

Others	Diamond
M-35, SA1	S1 (one hole)
M-1, SK1	S2 (one hole)



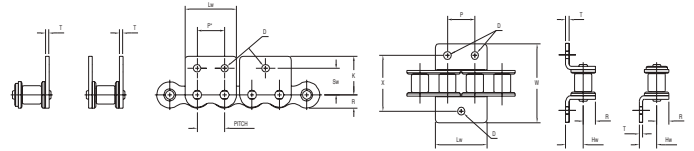
Others	Diamond
A1	B1 (one hole)
K1	B2 (one hole)

Dimensions in Inches

Diamond Number	Pitch Inches	D	H	K	L	R Max.	S	T	WI	WO	X
25SS	.250	.125	.180	.451	.218	.119	.308	.030	.781	.843	.562
35SS	.375	.102	.250	.577	.312	.178	.387	.050	1.125	1.125	.750
40SS	.500	.141	.312	.684	.375	.238	.489	.060	1.390	1.390	1.000
41SS	.500	.141	.282	.698	.375	.192	.482	.050	1.375	1.375	.937
50SS	.625	.203	.406	.895	.500	.297	.618	.080	1.812	1.812	1.250
60SS	.750	.203	.478	1.038	.625	.356	.716	.094	2.135	2.135	1.500
80SS	1.000	.266	.625	1.339	.750	.475	.968	.125	2.750	2.750	2.000

Note: Above attachments available for multiple strand chain.

WIDE CONTOUR STRAIGHT AND BENT ATTACHMENT STAINLESS STEEL CHAIN



Others	Diamond	Others	Diamond
WM-35	WCS1 (one hole)	WM-1	WCS2 (one hole)
WM-35-2	WCS1 (two holes)	WM-2	WCS2 (two holes)

Others	Diamond	Others	Diamond
WA-1	WCB1 (one hole)	WK-1	WCB2 (one hole)
WA-2, A2	WCB1 (two holes)	WK-2, K2	WCB2 (two holes)

Dimensions in Inches

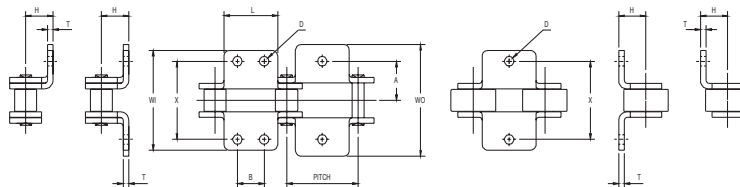
Diamond Number	Pitch Inches	D	Hw	K	Lw	P	R Max.	Sw	T	W	X
35SS	.375	.125	.262	.577	.727	.375	.178	.399	.050	1.105	.750
40SS	.500	.141	.326	.684	.946	.500	.238	.503	.060	1.366	1.000
50SS	.625	.203	.406	.895	1.211	.625	.297	.618	.080	1.807	1.250
60SS	.750	.203	.478	1.038	1.420	.750	.356	.716	.094	2.135	1.500
80SS	1.000	.266	.625	1.339	1.885	1.000	.475	.967	.125	2.750	2.000

Contact Diamond Chain for available attachments on roller links (wide contour).

Note: Above attachments available for multiple strand chain.

DOUBLE-PITCH OVAL CONTOUR STAINLESS STEEL CONVEYOR CHAIN BENT ATTACHMENTS OVAL CONTOUR LINK PLATES/STANDARD AND OVERSIZED ROLLER

Others	Diamond
A1	B1 (one hole)
A2	B1 (two holes)



Others	Diamond
K1	B2 (one hole)
K2	B2 (two holes)

Dimensions in Inches

Standard Roller		Pitch Inches	A	B	D	H	L	T	WI	WO	X	Large Roller	
Diamond Number	Roller Diameter											Diamond Number	Roller Diameter
C2040SS	.312	1.00	.500	.375	.141	.355	.750	.060	1.350	1.488	1.000	C2042SS	.625
C2050SS	.400	1.25	.625	.469	.203	.453	.937	.080	1.692	1.863	1.250	C2052SS	.750
C2060SS	.469	1.50	.844	.562	.203	.561	1.125	.094	2.115	2.317	1.688	C2062SS	.875
C2080SS	.625	2.00	1.094	.750	.266	.739	1.500	.125	2.760	3.028	2.188	C2082SS	1.125

CORROSION CHAIN - CHAIN DESCRIPTIONS AND DIMENSIONS

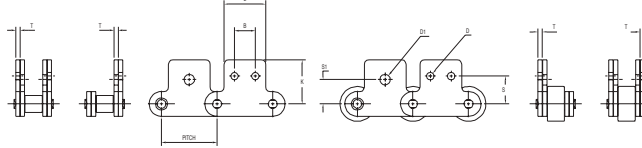
FOR MORE INFORMATION, PLEASE CONTACT YOUR SALES DISTRICT MANAGER OR CALL 877-484-6536 TO PLACE YOUR ORDER.

NOTHING OUTLASTS A DIAMOND.®



DOUBLE-PITCH OVAL CONTOUR STAINLESS STEEL CONVEYOR CHAIN STRAIGHT ATTACHMENTS (OVAL CONTOUR LINK PLATES/STANDARD AND OVERSIZED ROLLER)

Others	Diamond
M-3S, SA1	S1 (one hole)
M-3S-2, SA2	S1 (two holes)

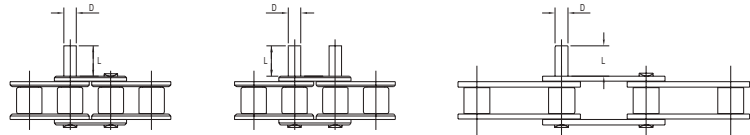


Others	Diamond
M-1, SK1	S2 (one hole)
M-2, SK2	S2 (two holes)

Standard Roller		Pitch Inches	2 Attachment Holes						1 Attachment Hole		Large Roller	
Diamond Number	Roller Diameter		B	D	S	K	L	T	D1	S1	Diamond Number	Roller Diameter
C2040SS	.312	1.00	.375	.141	.531	.773	.750	.060	.188	.438	C2042SS	.625
C2050SS	.400	1.25	.469	.203	.625	.971	.937	.080	.250	.563	C2052SS	.750
C2060SS	.469	1.50	.562	.203	.750	1.203	1.125	.094	.329	.688	C2062SS	.875
C2080SS	.625	2.00	.750	.266	1.000	1.590	1.500	.125	.375	.875	C2082SS	1.125

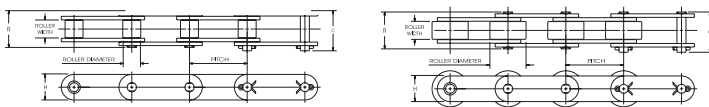
STANDARD EXTENDED PIN STAINLESS STEEL CHAIN

Others	Diamond
D1	E1 (one extended pin)
D3	E2 (two extended pins)



Diamond Number	Pitch Inches	D ± .0005"	L ± .010"
35SS	.375	.141	.375
40SS	.500	.156	.383
41SS	.500	.141	.375
50SS	.625	.200	.469
60SS	.750	.234	.562
80SS	1.000	.312	.750

Diamond Number	Pitch Inches	D ± .0005"	L ± .010"
C2040SS	1.00	.156	.375
C2042SS	1.00	.156	.375
C2050SS	1.25	.200	.469
C2052SS	1.25	.200	.469
C2060SS	1.50	.234	.562
C2062SS	1.50	.234	.562
C2080SS	2.00	.312	.750
C2082SS	2.00	.312	.750



DOUBLE-PITCH OVAL CONTOUR STAINLESS STEEL CONVEYOR CHAIN STANDARD DIAMETER ROLLER

Diamond Number	Pitch Inches	Roller Width	Roller Diameter	Pin Diameter	Link Plate Thickness	C	R	Weight Per Foot	Average Tensile Strength
C2040SS	1	5/16	.312	.156	.060	.76	.68	.34	3000
C2050SS	1 1/4	3/8	.400	.200	.080	.92	.84	.56	4700
C2060SS	1 1/2	1/2	.469	.234	.094	1.11	1.05	.81	6750
C2080SS	2	5/8	.625	.312	.125	1.44	1.32	1.40	12000

DOUBLE-PITCH OVAL CONTOUR STAINLESS STEEL CONVEYOR CHAIN LARGE DIAMETER ROLLER

Diamond Number	Pitch Inches	Roller Width	Roller Diameter	Pin Diameter	Link Plate Thickness	C	R	Weight Per Foot	Average Tensile Strength
C2042SS	1	5/16	.625	.156	.060	.76	.68	.55	3000
C2052SS	1 1/4	3/8	.750	.200	.080	.92	.84	.86	4700
C2062SS	1 1/2	1/2	.875	.234	.094	1.11	1.05	1.27	6750
C2082SS	2	5/8	1.125	.312	.125	1.44	1.32	2.06	12000

CORROSION CHAIN - CHAIN DESCRIPTIONS AND DIMENSIONS

FOR MORE INFORMATION, PLEASE CONTACT YOUR SALES DISTRICT MANAGER OR CALL 877-484-6536 TO PLACE YOUR ORDER.