

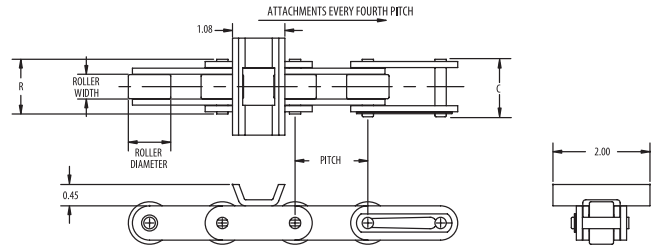
SAPPHIRE®

BY DIAMOND



Sapphire Specialty Application series chain is available for a variety of applications including agriculture and motor sports.

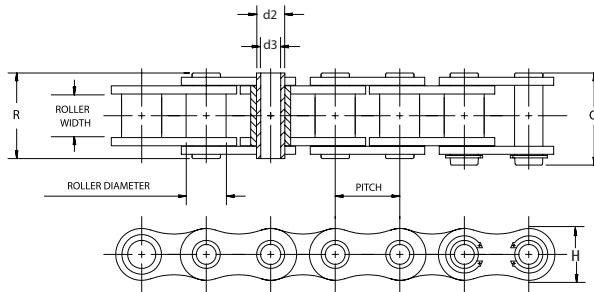
COTTON MODULE CHAIN



Dimensions in Inches

ASME/ANSI Number	Pitch	Roller Width	Roller Diameter	Pin Diameter	C	R	Link Plate Thickness	Minimum Tensile Strength
C2062H CM	1 1/2	1/2	.875	.234	1.25	1.18	.125	7030

HOLLOW PIN



Dimensions in Inches

ASME/ANSI Number	Pitch Inches	Roller Width	Roller Diameter *	Pin Outer Diameter d2	Pin Inner Diameter d3	Link Plate Height H	Link Plate Thickness	C	R	Pounds Per Foot	Minimum Tensile Strength
40HP	0.500	0.309	0.312	0.222	0.157	0.472	0.059	0.693	0.650	0.390	2205
50HP	0.625	0.370	0.400	0.277	0.202	0.594	0.079	0.862	0.815	0.637	4079
60HP	0.750	0.495	0.469	0.327	0.236	0.709	0.094	1.055	1.016	0.939	5732
80HP	1	0.620	0.625	0.449	0.317	0.945	0.126	1.331	1.280	1.697	11023
C2040HP	1	0.309	0.312	0.222	0.157	0.472	0.059	0.693	0.650	0.305	2205
C2050HP	1 1/4	0.370	0.400	0.284	0.202	0.591	0.079	0.862	0.815	0.500	4079
C2060HP	1 1/2	0.495	0.469	0.327	0.236	0.669	0.094	1.055	1.015	0.93	5732
C2062H HP	1 1/2	0.495	0.875	0.327	0.236	0.669	0.126	1.055	1.015	1.30	5732
C2080HP	2	0.620	0.625	0.449	0.317	0.945	0.126	1.331	1.280	1.21	11023
C2082H HP	2	0.620	1.125	0.449	0.317	0.945	0.156	1.480	1.425	1.58	11023

*Chain is rollerless - dimension shown is bushing diameter.

AGRICULTURE CHAIN

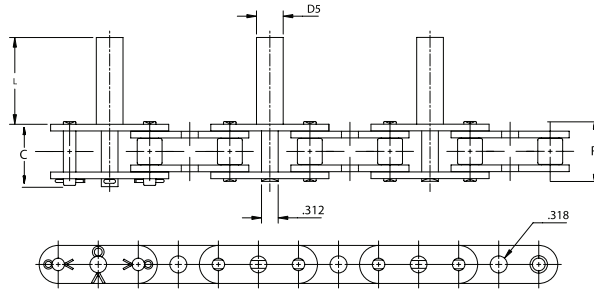


NOTHING OUTLASTS A DIAMOND.®



AGRICULTURE-CHAIN DESCRIPTIONS AND DIMENSIONS

CITRUS CHAIN



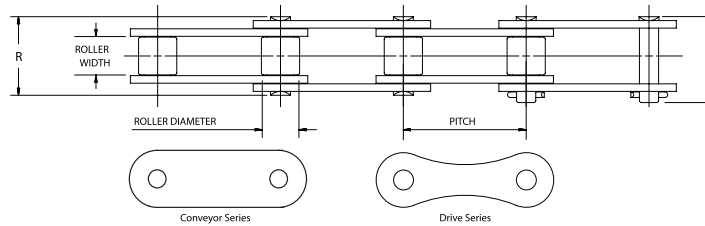
Dimensions in Inches

Type	D5	"L"
1	1/2	1.625
2	9/16	1.625

ASME/ANSI Number	Pitch Inches	Roller Width	Roller Diameter	Pin Diameter	Link Plate Thickness	C	R	Pounds Per Foot*	Minimum Tensile Strength
C2060H C	1 1/2	0.495	0.469	0.234	0.125	1.25	1.18	1.05	7030
C2060HSS C	1 1/2	0.495	0.469	0.234	0.125	1.25	1.18	1.03	5730

*Approximate - weight will vary depending upon D5 pin required.

AGRICULTURE CHAIN



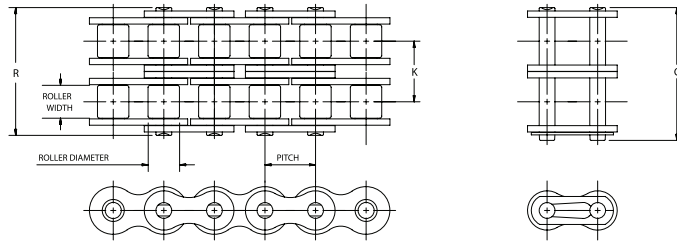
Dimensions in Inches

ASME/ANSI Number	Pitch Inches	Roller Width	Roller Diameter	Pin Diameter	Link Plate Thickness	C	R	Pounds Per Foot	Average Tensile Strength
Conveyor Series									
CA550	1.63	51/64	.656	.283	.105	1 9/16	1 3/8	1.30	12125
CA555	1.63	1/2	.656	.283	.125	1 1/4	1 3/16	1.21	13228
CA557	1.63	51/64	.700	.315	.125	1 19/32	1 15/32	1.72	16535
CA620	1.64	63/64	.696	.283	.125	1 27/32	1 41/64	1.57	13228
C2060H	1.50	1/2	.469	.235	.125	1 1/4	1 3/16	1.05	9700
Drive Series									
A550	1.63	51/64	.656	.283	.105	1 9/16	1 3/8	1.10	12125
A620	1.64	63/64	.696	.283	.125	1 27/32	1 41/64	1.38	13228

NOTHING OUTLASTS A DIAMOND.®



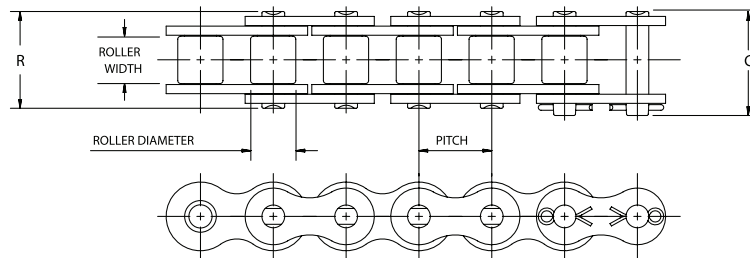
COUPLING CHAIN



Dimensions in Inches

ASME/ANSI Number	Pitch Inches	Roller Width	Roller Diameter	C	R	K	Length Pitches	Pounds Per Foot
D4012	1/2	0.312	0.312	1.297	1.24	0.566	12	0.41
D4016	1/2	0.312	0.312	1.297	1.24	0.566	16	0.55
D5016	5/8	0.375	0.400	1.592	1.55	0.713	16	1.12
D5018	5/8	0.375	0.400	1.592	1.55	0.713	18	1.26
D6018	3/4	0.500	0.469	1.980	1.94	0.897	18	2.16
D6020	3/4	0.500	0.469	1.980	1.94	0.897	20	2.40
D6022	3/4	0.500	0.469	1.980	1.94	0.897	22	2.64
D8018	1	0.625	0.625	2.567	2.47	1.153	18	5.00
D8020	1	0.625	0.625	2.567	2.47	1.153	20	5.56
D10018	1 1/4	0.750	0.750	3.162	3.02	1.408	18	9.24
D10020	1 1/4	0.750	0.750	3.162	3.02	1.408	20	10.30
D12018	1 1/2	1.000	0.875	3.977	3.79	1.789	18	16.20
D12022	1 1/2	1.000	0.875	3.977	3.79	1.789	22	19.80

POWERSPORTS & ATV CHAIN



Dimensions in Inches

ASME/ANSI Number	Pitch Inches	Roller Width	Roller Diameter	Pin Diameter	Link Plate Thickness	C	R	Pounds Per Foot	Average Tensile Strength
219H	0.306	0.197	0.181	.118	.047	0.47	0.200	1720
219H BP	0.306	0.197	0.181	.118	.047	0.47	0.200	1720
420	1/2	1/4	0.306	.156	.060	0.07	0.58	0.270	4070
428	1/2	1/3	.335	.174	.060	0.71	0.66	0.448	4200
428H	1/2	1/3	.335	.174	.070	0.77	0.74	0.536	4200
520	5/8	1/4	.400	.200	.080	0.77	0.71	0.631	6600
520H	5/8	1/4	.400	.200	.094	0.80	0.74	0.817	6600
530	5/8	5/8	.400	.200	.080	0.89	0.83	0.711	6600
530H	5/8	5/8	.400	.200	.094	0.92	0.86	0.897	6600

AGRICULTURE-CHAIN DESCRIPTIONS AND DIMENSIONS